

# COMFORT STOREFRONT

DIGNIFYING PUBLIC HEALTH  
AND WELLNESS FOR ALL

## PROJECT STATEMENT

Though the city is full of an immense diversity of people, cultures, and viewpoints, one thing unites everyone: the need to use the bathroom. This basic need is often at odds with the availability of public bathrooms. In particular, those that are displaced or in economically precarious conditions are most burdened; consider an individual experiencing homelessness,

a rideshare driver, a tourist, a migrant selling candy or other goods while they aspire for socioeconomic stability, or even the local Bostonian shopping or commuting to work.

Looking to the 20th-century model of "Comfort Stations," which have largely disappeared, this

proposal takes up the problem of public health and well-being through the design of Comfort Storefront, which contains toilets, sinks, and showers for public use. Comfort Storefront is staffed with a Help Desk to provide information and some health related products to those that need them, from toothpaste to naloxone, alongside a wide variety of other goods.



The public potties and washing resources are combined with a small spa for paying customers, which includes a dry sauna room, a steam room, and a cold plunge pool. The rotating project space, which jointly serves as a central courtyard or lobby, is dedicated toward outreach groups to connect with community members and provide information and gather data to those willing

to engage. Social workers and non-profit groups can use the space to connect with people and also display information on fixed and non-fixed boards for public dissemination.

The facility's layout learns from Nolli's instructive map of Rome, by pulling the collective space of the street deep into the building. This large courtyard brings

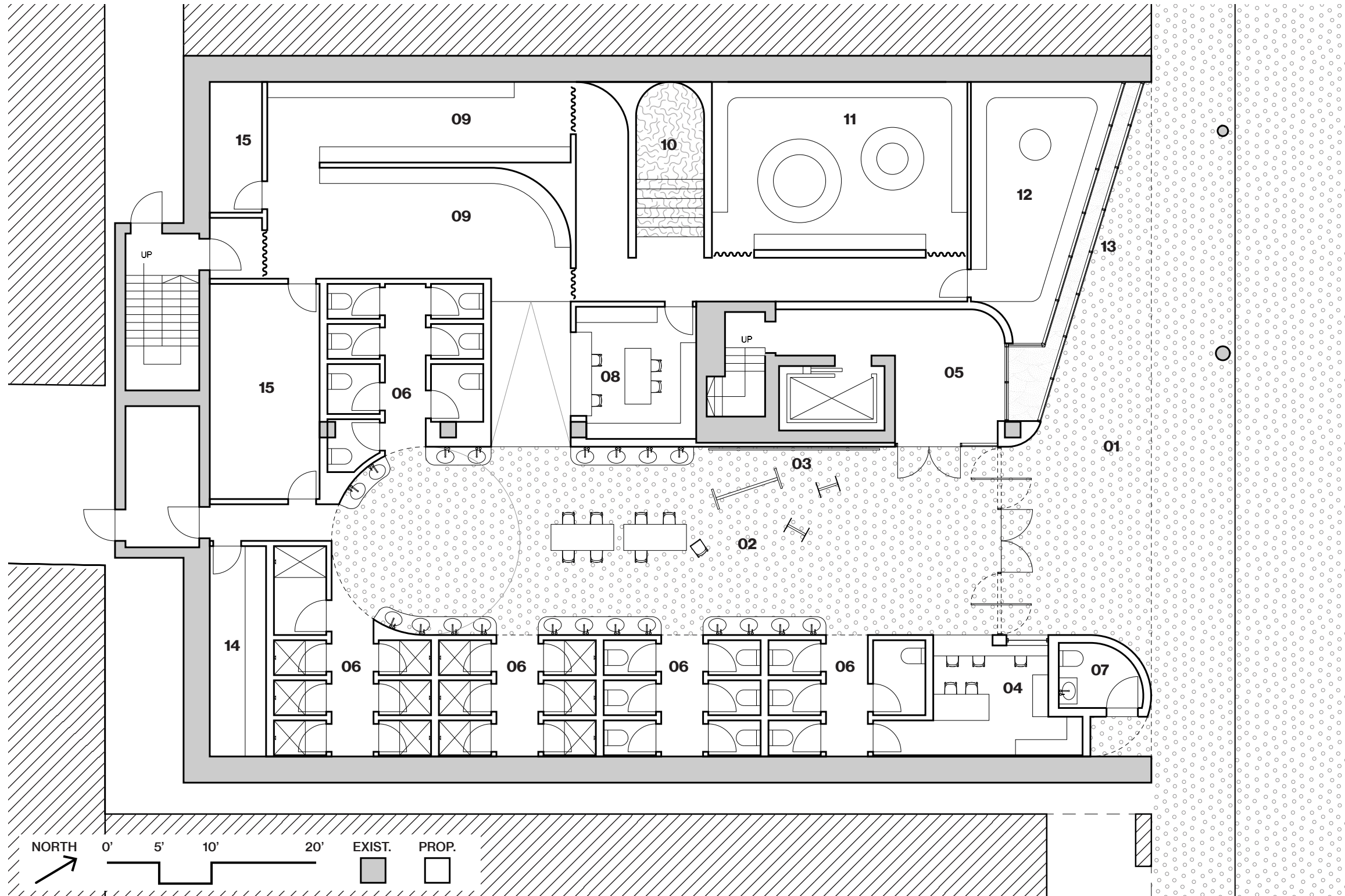
all four aspects of the program together: it serves as the rotating project space, it features banks of sinks and distributes visitors to the toilets and showers, and it provides access to the spa and residential lobby.

While the spa spaces are tucked away from direct street access, the storefront facade is intended to make the sauna atmosphere visible to passers-by. The

steam room is located adjacent to the facade, which comprises two layers of storefront framing to create a humid cavity filled with condensation ("Steam Wall"). In contrast to the typical function of a storefront in commercial settings, this application produces a blurred condition that suggests activity inside to pique desire, while allowing for privacy of those enjoying the spa.



FLOOR PLAN



PLANKEY

- 01. Covered Entry Patio**  
600 sf  
The angled and curved walls create a fluid transition from the street to the interior.
- 02. Lobby / Rotating Project Space**  
1,050 sf  
A collective space where all of the combined uses of the building come together and for people of different walks of life to acknowledge one another. The walls are lined with sinks and mirrors for communal use.
- 03. Display Board**  
NA  
The singular fixed element within the rotating project space intended for dissemination of information on social services.
- 04. Help Desk**  
160 sf  
With windows to the interior lobby and exterior covered patio, the Help Desk is able to provide information and free health-related goods to those that need them.
- 05. Residential Lobby**  
360 sf
- 06. Toilets, Showers, & Access Halls**  
1,075 sf
- 07. Restroom Accessible from Exterior**  
50 sf
- 08. Spa Welcome Desk & Office**  
185 sf
- 09. Spa Changing Rooms**  
500 sf
- 10. Cold Plunge Pool**  
100 sf
- 11. Dry Sauna**  
400 sf
- 12. Steam Room**  
250 sf
- 13. Steam Wall**  
75 sf  
Humidity from the adjacent steam room is pulled into a facade cavity to produce intentional steam and condensation for visibility to the street.
- 14. Storage for Project Space**  
110 sf
- 15. B.O.H. (Storage & Equipment)**  
200 sf

SECTION

**SECTION KEY**

- 01. Covered Entry Patio
- 02. Steam Wall (Clear Glass w/ Condensation)
- 03. Privacy / Frosted Glass
- 04. Clear Glass
- 05. Steam Room
- 06. Dry Sauna
- 07. Cold Plunge Pool
- 08. Spa Changing Rooms
- 09. Lobby, Sinks, Project Space
- 10. Toilets & Showers Access Hall

