

# [Re] Framed Landscapes

In urban environments, progress is often hidden behind walls of scaffold and revealed only when deemed ready for use. With turbulent economic and social conditions surrounding construction, these phases usually last months, if not years, creating long-lasting barriers within our communities. This disconnect between infrastructure and the people it serves hides transitory stages behind a curtain of progress.

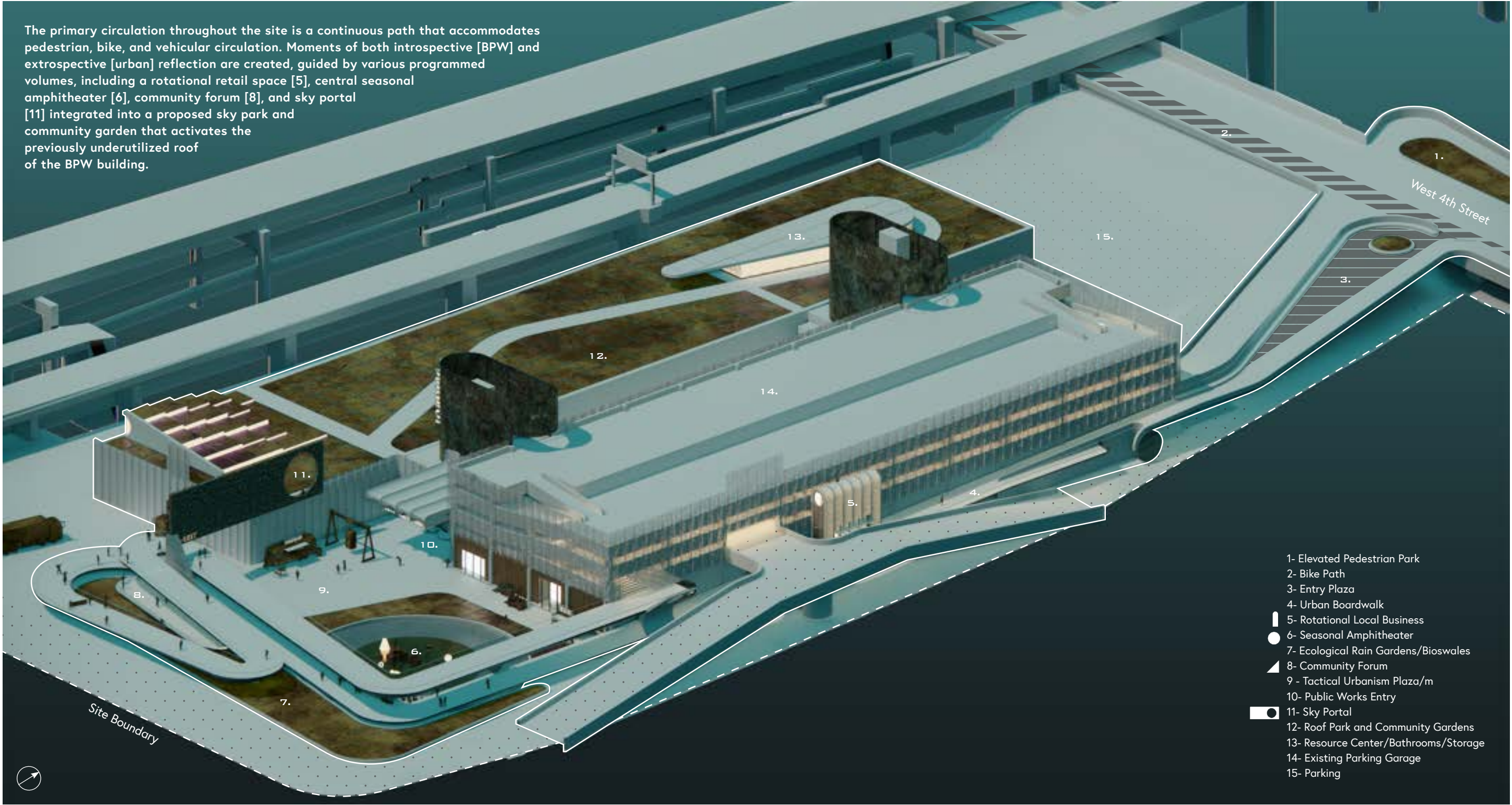
By reframing this narrative, a more transparent and honest process is imagined. Instead of concealing cyclical improvement and remedial acts, architecture and infrastructure are treated as one and used to frame imperfect moments, ephemeral instances that are not apologetic about their current state. This process begs the question: Can architecture help us be more empathetic and conscious of our current condition? Can sincere urban vignettes trigger emotional responses that foster change and meaningful interaction?

The following proposal teeters between current time and 2070 - a speculative narrative after a record-breaking storm surge. Throughout these timelines, we meander along an urban boardwalk woven throughout the BPW site and follow a series of architectural "characters" [volumes] that [Re]Frame our current context while fostering space for a more equitable, sustainable, and engaging future.





The primary circulation throughout the site is a continuous path that accommodates pedestrian, bike, and vehicular circulation. Moments of both introspective [BPW] and extrospective [urban] reflection are created, guided by various programmed volumes, including a rotational retail space [5], central seasonal amphitheater [6], community forum [8], and sky portal [11] integrated into a proposed sky park and community garden that activates the previously underutilized roof of the BPW building.



- 1- Elevated Pedestrian Park
- 2- Bike Path
- 3- Entry Plaza
- 4- Urban Boardwalk
- 5- Rotational Local Business
- 6- Seasonal Amphitheater
- 7- Ecological Rain Gardens/Bioswales
- 8- Community Forum
- 9 - Tactical Urbanism Plaza/m
- 10- Public Works Entry
- 11- Sky Portal
- 12- Roof Park and Community Gardens
- 13- Resource Center/Bathrooms/Storage
- 14- Existing Parking Garage
- 15- Parking

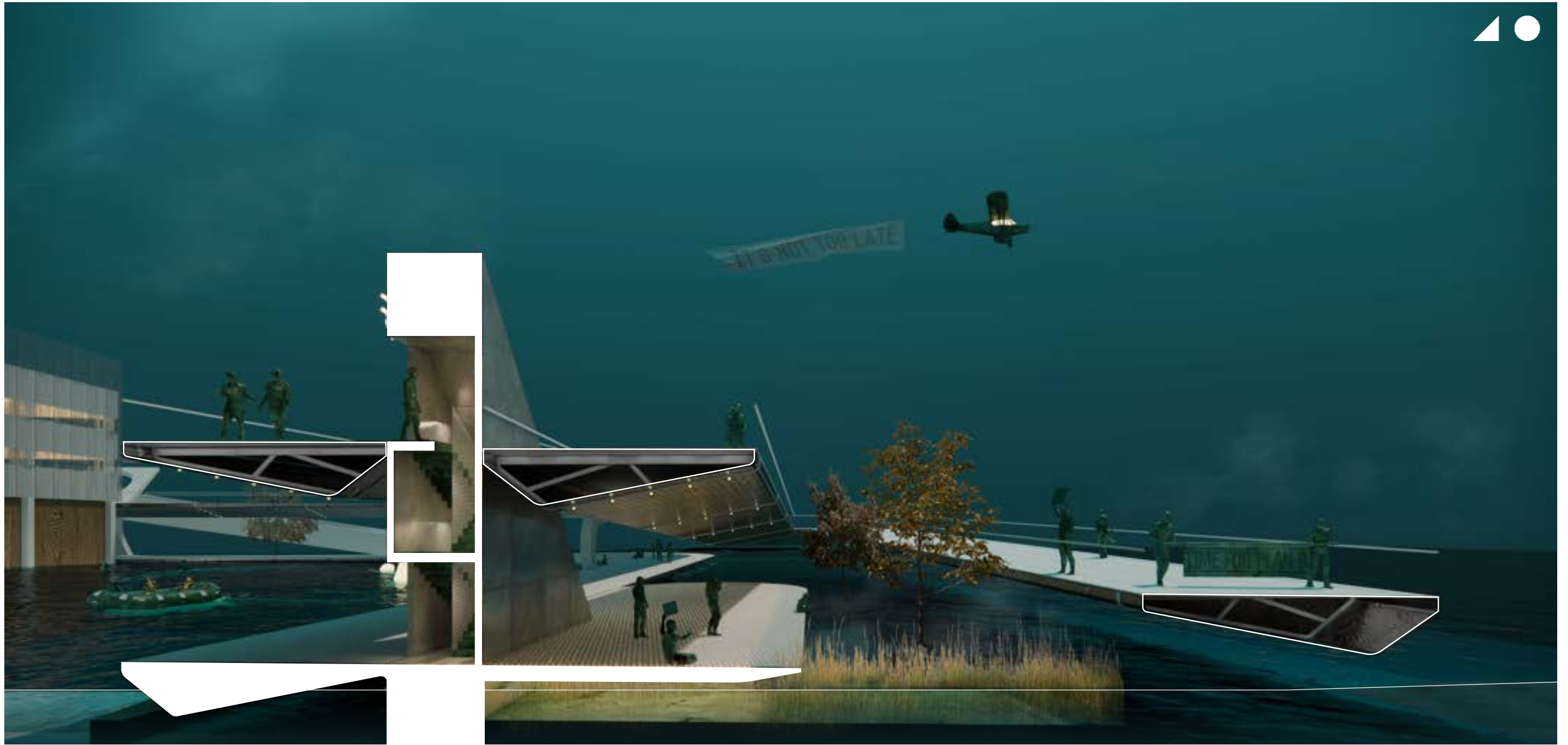


The existing BPW structures on site remain rather untouched, preserving access and function but overlaid with new facade screening that allows for a new identity. As the circulation path weaves throughout the site at varied elevations, moments to reflect back on the city and its infrastructure are created while the existing public works facility acts as a backdrop and reminder of their constant push for a better tomorrow. With projections of up to 7' of sea level rise by 2070 and the site's positioning within a vulnerable flood region, the main circulation path is designed to accommodate heightened environmental conditions.





Community Rally for Advocation of Climate Change



With storm swells compounding on record-high sea levels, the Fort Point channel on the site's north-facing side has been overcome, leaving the facility vulnerable to widespread flooding. Site landscaping and lush bioswales submerge into a sea of blue. Ground-level functions have halted as community members begin to gather on the bridges above and reflect.





Seasonal Amphitheater and Pop-Up Market



Along the site's eastern boundary, a universally accessible bike and pedestrian path connects the central gathering hub on the site's lower level to the bridge and road artery of West 4th Street on the right. The corridor runs below two entries to the existing parking garage, one vehicular [center] and one pedestrian [left]. A central glowing volume grounds the connection and offers a pop-up location for local businesses and non-profits.





Boardwalk and Rotational Market Post Storm Surge [2070]

Post flood, as many are home, the streets have grown quiet. Water levels are taking much longer to subside than expected, and locals have come out to explore the unfamiliar results of their new urban context. The tracks of the MBTA commuter rail have vanished, and a quiet blue lagoon stands in their place. The boardwalk filled with runners and bikers commuting home from work the day before now remains rather barren. The air feels much cooler than usual, but throughout it all, local street art glows brightly in a warm, soft glow.



The community explores the newly integrated facility as the boardwalk grows in popularity. On the path's upper level, a framed portal curates a vignette of Boston's south end and I-93 [currently under construction for maintenance].



Urban View Portal





Connected by a newly integrated bike path, a series of small vessels are nestled under I-93 to complete the circulation artery and relationship to Boston's south end. Acting as small plazas for tactical urbanism, the vessels act as armatures for the community to host various pop-up events and seasonal activities.